

Chess test

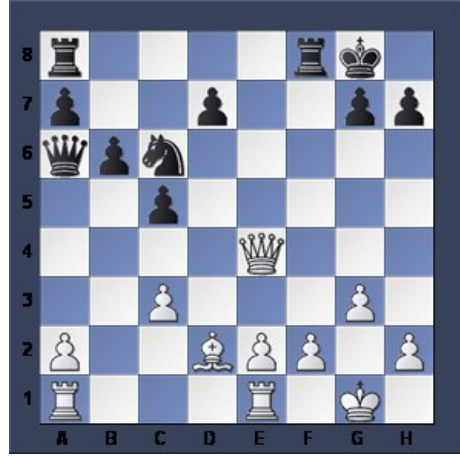
The test is externally similar to the Bratko-kopec test, but calculating the result is done differently. For each position every move is given an evaluation by Rybka and their rank. All you need to do is to pick two preferred moves in priority order. The result is computed according to the following formula:

$$R = A(|m1 - cm1 + (m2 - cm2); \text{ if } < 0, \text{ then } 0|)$$

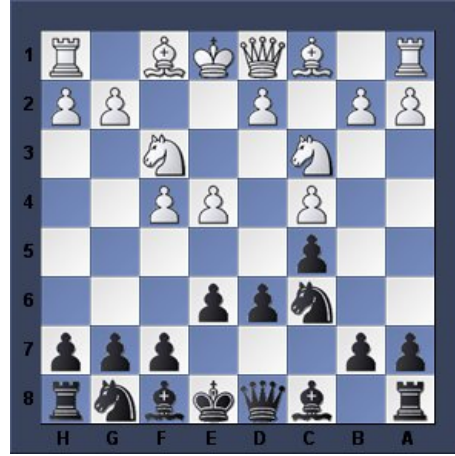
R - result; A - average; m1, m2 - evaluation of 1st and 2nd best moves; cm1, cm2 - evaluation of 1st and 2nd chosen moves.



A
1st move: (0.05) 14.000
2nd move: (1.10) 14.000



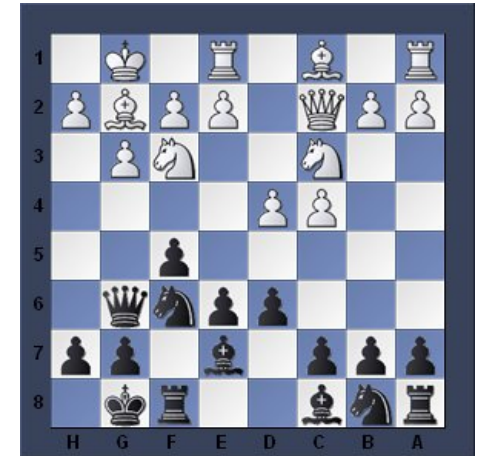
B
1st move: (0.20) 10.000
2nd move: (0.20) 10.000



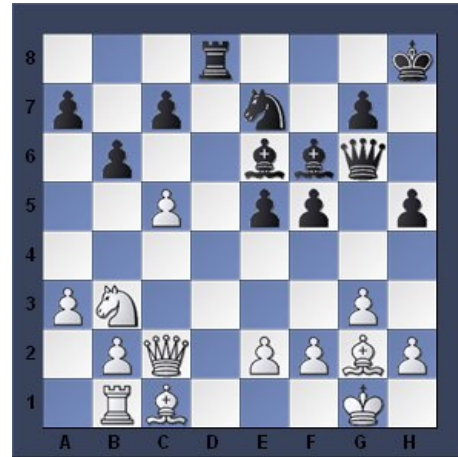
C
1st move: (0.05) 4.500
2nd move: (0.05) 4.500



D
1st move: (0.05) 20.500
2nd move: (0.20) 20.500



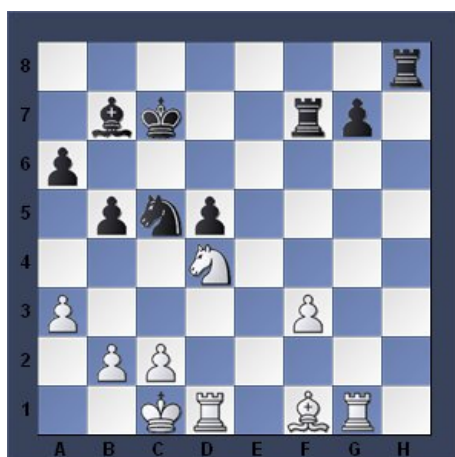
E
1st move: (0.05) 1.500
2nd move: (0.05) 1.500



F
1st move: (0.05) 24.500
2nd move: (0.05) 24.000



G
1st move: (0.10) 11.500
2nd move: (0.20) 11.500



H
1st move: (0.10) 24.500
2nd move: (0.20) 24.500



I
1st move: (0.05) 10.500
2nd move: (0.05) 10.500



J
1st move: (0.05) 41.000
2nd move: (0.05) 41.000